

DATASHEET

KSS Flushing Ring

KSS Data Sheet - DC - AC - 001 - 00



Product Overview



Flushing rings are used with flanged chemical seal systems for flushing or venting the space immediately in front of the diaphragm. They are simply mounted between the flanged process connection and the diaphragm seal. The two flushing ports allow washing out of particles accumulated in front of the membrane and the pressure space can be vented or drained according to requirement.

Applications

- Flush rings are used for diaphragm seals in order to prevent clogging of the instrument connection.
- The flush ring is mounted between the process flange and the diaphragm seal.

Standard Features



- The flushing ports allow the washing out of particles accumulated in front of the membrane.
- The pressure chamber can be vented or drained or filled with a cleaning liquid and subsequently flushed, depending on the requirement.
- Various nominal widths and forms allow adaption to the respective process flange. See Optional Features.
- Standard flushing connection: 1/2 NPT female
- Sealing face:
- Acc. to EN 1092-1 Form B1
- Acc. to ASME B 16.5 RF
- Materials: 316/316L, dual certified

Optional Features



- Flushing connection with different female threads: G 1/2, G1/4, 1/4 NPT
- Pipe plugs and various valves
- Other sealing faces, e.g. groove, tongue, RTJ
- Exotic Alloys, e.g. Duplex, Alloy C-276, Alloy 625
- Flush rings for sour gas service are available in accordance with NACE MR0175/ MR0103 and ISO 15156 by default.
- Special cleaning
- Inspection certificate 3.1 acc. to EN 10 204
- Flush Ring Type G and Dual Flange Style Type D
 - Concentric or excentric (Type G only)
 - 1 or 2 vent / flushing connections
 - PFA lining optional (Type G only)
 - Adapting of nominal pipe size (NPS)
 - Allows disassembly of diaphragm seal without removing the flush ring

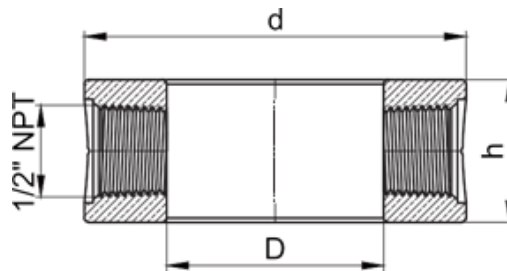
Technical Specifications

Description	Standard	Option
Flushing Connection	2 x 1/2" NPT female	1/4" NPT, 1/2" BSP, 1/4" BSP female Others on request
Material	Stainless Steel 316 / 316L	Hastelloy C276, Inconel 600, Monel 400, Nickel, Titanium, SS-321, SS-304/304L Others on request
Plug screws	2 x 1/2" NPT male	1/4" NPT, 1/2" BSP, 1/4" BSP male Others on request
Sealing face	ASME B16.5 Raised Face(RF)	ASME B16.5 Ring Type Joint(RTJ)EN 1092-1 Form B1 Others on request
Valve Mounting	Without	Needle valve, Ball valve, Multi-point valve Others on request

Note:

Other process connections and materials on request

Sealing gasket are not part of standard supply and should be made of a material appropriate for process medium.



Connections as per EN 1092-1, Form B1				
Dimensions (mm)				
DN	PN	d	D	h
25	16...400	68	27	33 (25 for 1/4" NPT)
40	16...400	88	50	33 (25 for 1/4" NPT)
50	16...400	102	62	33 (25 for 1/4" NPT)
80	16...400	138	92	33 (25 for 1/4" NPT)
100	16...400	162	92	33 (25 for 1/4" NPT)
125	16...400	188	126	33 (25 for 1/4" NPT)

(Raised Face)				
Dimensions (mm)				
Size	Class	d	D	h
1"	150...2500	51	27	33 (25 for 1/4" NPT)
1.1/2"	150...2500	73	41	33 (25 for 1/4" NPT)
2"	150...2500	92	62	33 (25 for 1/4" NPT)
3"	150...2500	127	92	33 (25 for 1/4" NPT)
4"	150...2500	157	92	33 (25 for 1/4" NPT)

Connections as per ANSI B 16.5, RF

Documentation

Following documents shall be provided as a standard part of supply,

- 1) Dimensional test report.
- 2) Material certificate 3.1 acc. to EN-10204 for all wetted parts
- 3) Other documents on request.

For inquiries contact us at:

Khot System And Solution

Corporate Office:

Plot no.- Plot No.-75-A/3/5, General Block, MIDC, Telco-Bhosari
Road, Behind Union Bank of India, Bhosari, Pune-4110026 India.

Factory Address:

PAP- D-46, Talegaon Industrial Area Phase 2, Mawal,
Mendhewadi, Pune-410507 India.

Web.: www.khotsystems.in | **E-mail:** info@khotsystems.in